

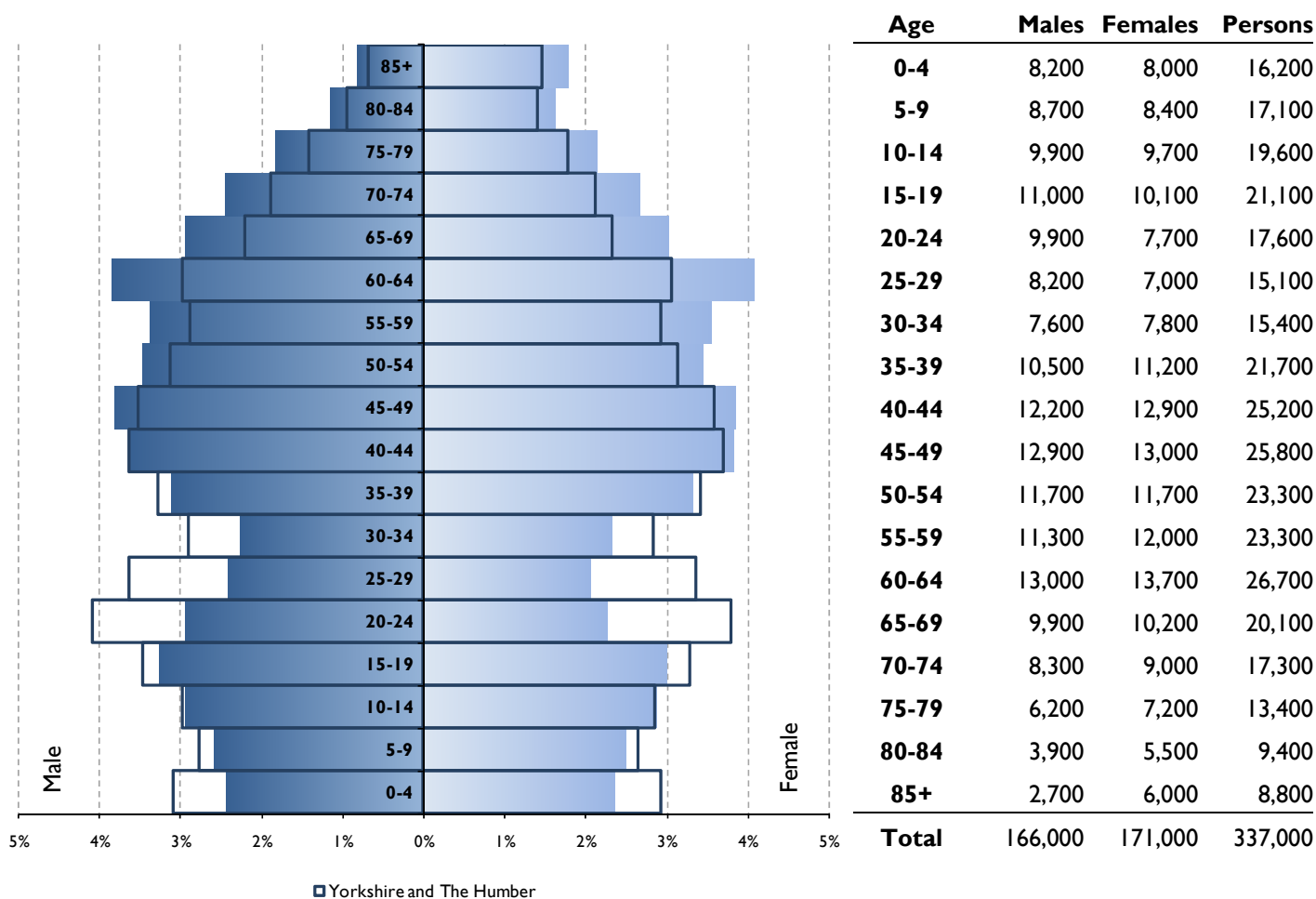
Mid-2009 Population Estimates

The Office for National Statistics (ONS) has released the Registrar General's population estimates for mid-2009. The population of the East Riding of Yorkshire has increased by 900 (0.3%) from mid-2008 to mid-2009, to 337,000.

	Census 2001	Mid-2008 estimate	Mid-2009 estimate	Percentage change over 2008
East Riding of Yorkshire	314,100	336,100	337,000	0.3%
Kingston upon Hull	249,000*	261,100	262,400	0.5%
Yorkshire and Humber	4,964,800	5,217,500	5,258,100	0.8%

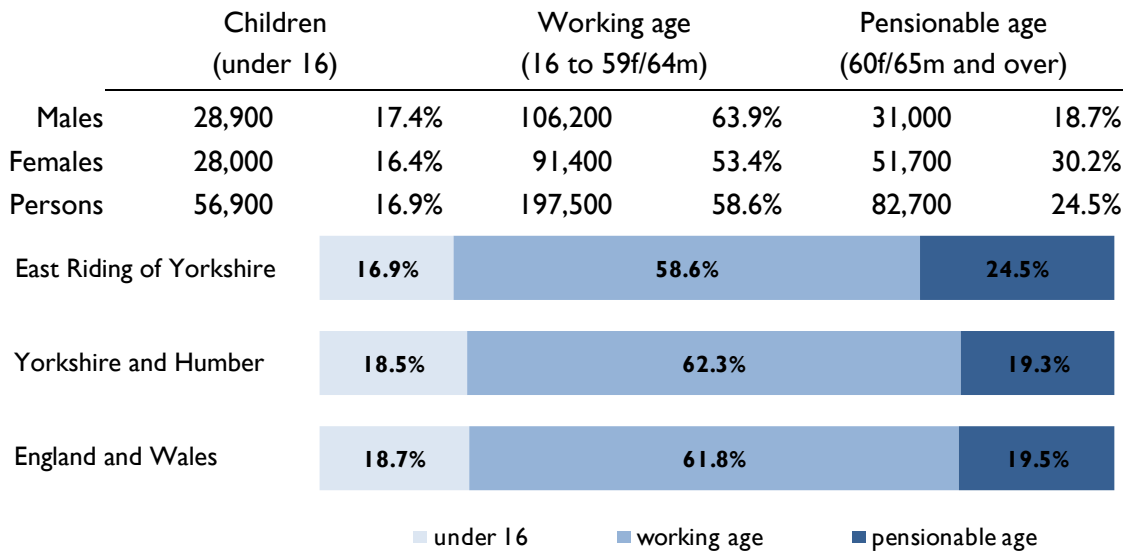
Figures are rounded. Census day was 29 April 2001, and the mid-year estimates are published in June each year. *Census 2001 totals for Hull give a figure of 243,600, but this has been recalculated to 249,900 as a result of investigations into undercounting in the 2001 Census.

- The rate of growth in the East Riding is slower than the England and Wales rate of 0.7%.
- The split between male and females is 49.3% male and 50.7% female.
- In the East Riding, the age group containing the highest number of people is 60-64.
- The 65+ population of the East Riding has grown by 2.5% since 2008, which is higher than that of the East Riding population as a whole or for the 65+ population in England and Wales (1.8%)
- The 80+ population of the East Riding has grown by 3.5%, which is a higher than that of the East Riding population as a whole or for the 80+ population in England and Wales (2.5%).

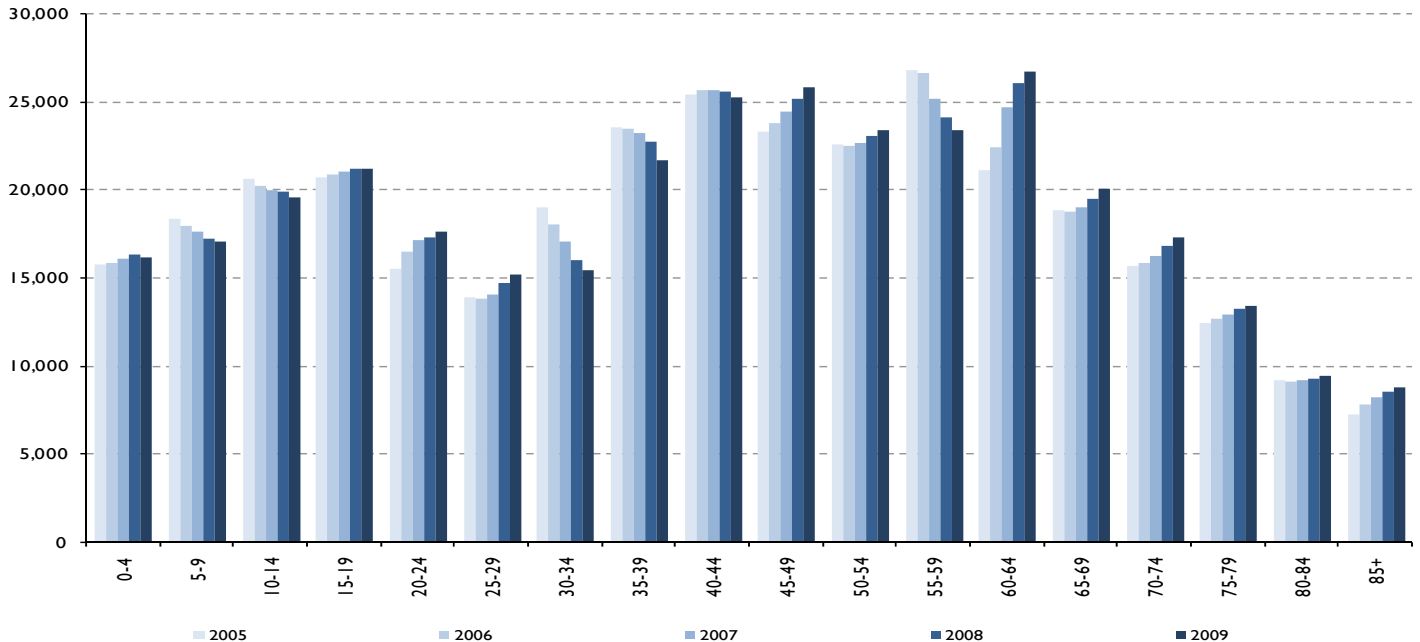


Population by broad age group

- Since the mid-year 2008 estimates, the proportion of children under 16 in the East Riding has decreased by 1.0%. In England and Wales the proportion in this age group has increased by 0.3%.
- The working age proportion has decreased by 0.3% since 2008. In England and Wales the proportion in this age group has increased by 0.1%.
- The proportion of people of pensionable age has increased since mid-2008 by 2.7%. This is a higher growth rate than for this age group in England and Wales (1.8%).



Population change over time, 2005-2009



- As can be seen in the graph above, there is a distinct increase over the years within the 60-64 age group. This is likely due to a spike in the population from the post-war baby boom, plus a degree of internal migration to the East Riding through retirement.
- There is evidence of continued out-migration in the 30-34 and 35-39 age groups, which is likely to be career related.
- The characteristics of the 55-59 group is distinctly different to that of 60-64, in that there has been a continual decrease in this population year on year. This is likely due to transition of the post-war baby boom to the next age group.

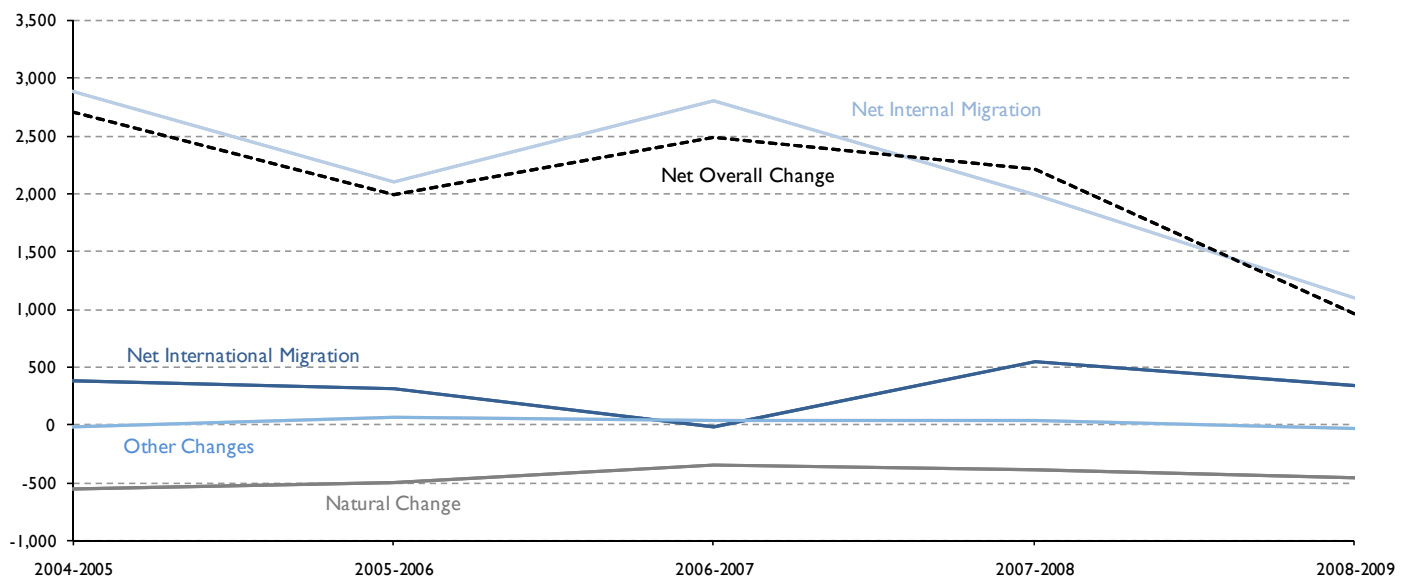
Components of change, 2008-2009

Definition: the various components of population change between the preceding and current mid-year reference points. These are:

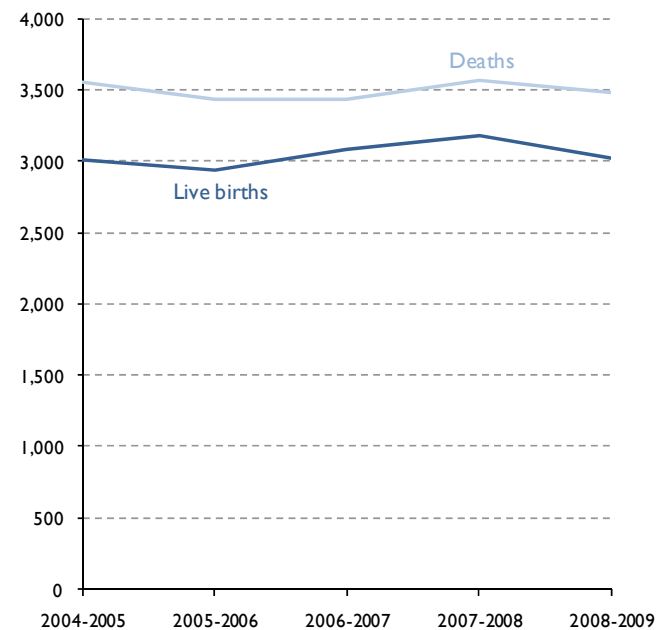
- births (to be added)
- deaths (to be subtracted)
- in-migrants (to be added)
- out-migrants (to be subtracted)

- There were more deaths than births in the East Riding between mid-2008 and mid-2009 (3,040 births and 3,490 deaths).
- Net migration and other changes account for an increase of 1,415 people in the East Riding (0.42%), compared to and an increase of 152,973 people in England and Wales (0.28%).

Components of population change between 2004-05 and 2008-09



Deaths and live births between 2004-05 and 2008-09



Migration and out-migration both internal and international between 2004-05 and 2008-09

