

Population Projections to 2033

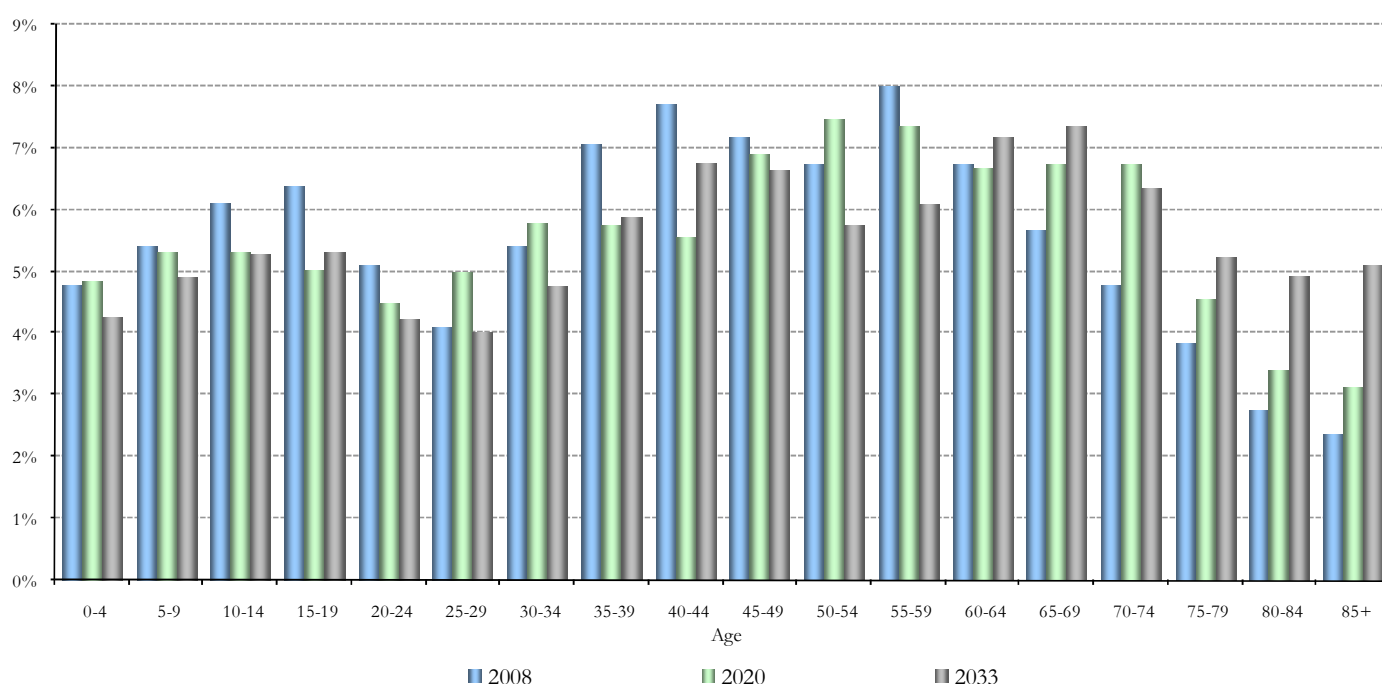
The latest subnational population projections available for England are based on the mid-2008 population estimates and project forward the population from 2008 to 2033.

<i>All figures are in thousands</i>	Mid-2008 estimate	2013	2019	2023	2028	2033	% change from 2008 to 2033
East Riding of Yorkshire	336.1	351.1	371.3	385.7	402.5	417.0	24.1%
Kingston upon Hull	261.1	273.8	287.9	288.6	307.6	317.9	21.8%
YORKSHIRE AND THE HUMBER	5,217.5	5,438.8	5,707.6	5,886.6	6,102.7	6,296.0	20.7%

Figures are in thousands. 2008 estimates are as at June 2008. Please note that it is ONS policy to publish population estimates and projections rounded to the nearest hundred persons. The population figures for 2008 to 2033 are the projected population based on mid-2008 population estimates.

- The population of East Riding is to increase by 80,900 people from 2008 to 2033.
- The rate of growth (24.1%) in the East Riding is higher than the national growth rate (18.0%), the regional growth rate (20.7%) and the growth rate of Hull (21.8%).
- The East Riding has an ageing population. By 2033, 29% of the total population will be aged 65 and over (an increase of 9.6% from 19.4% in 2006). This increase is much higher than the increase for England and Wales (5.7%) and Yorkshire and the Humber region (5.6%).
- In keeping with the national and regional trends, the proportion of working age population will decrease in the East Riding.
- The percentage of children under 15 years will decrease by 2.0% from 2008 to 2033.
- The percentage of 80+ population will nearly double by 2033 (from 5.1% in 2008 to 10.0% in 2033).

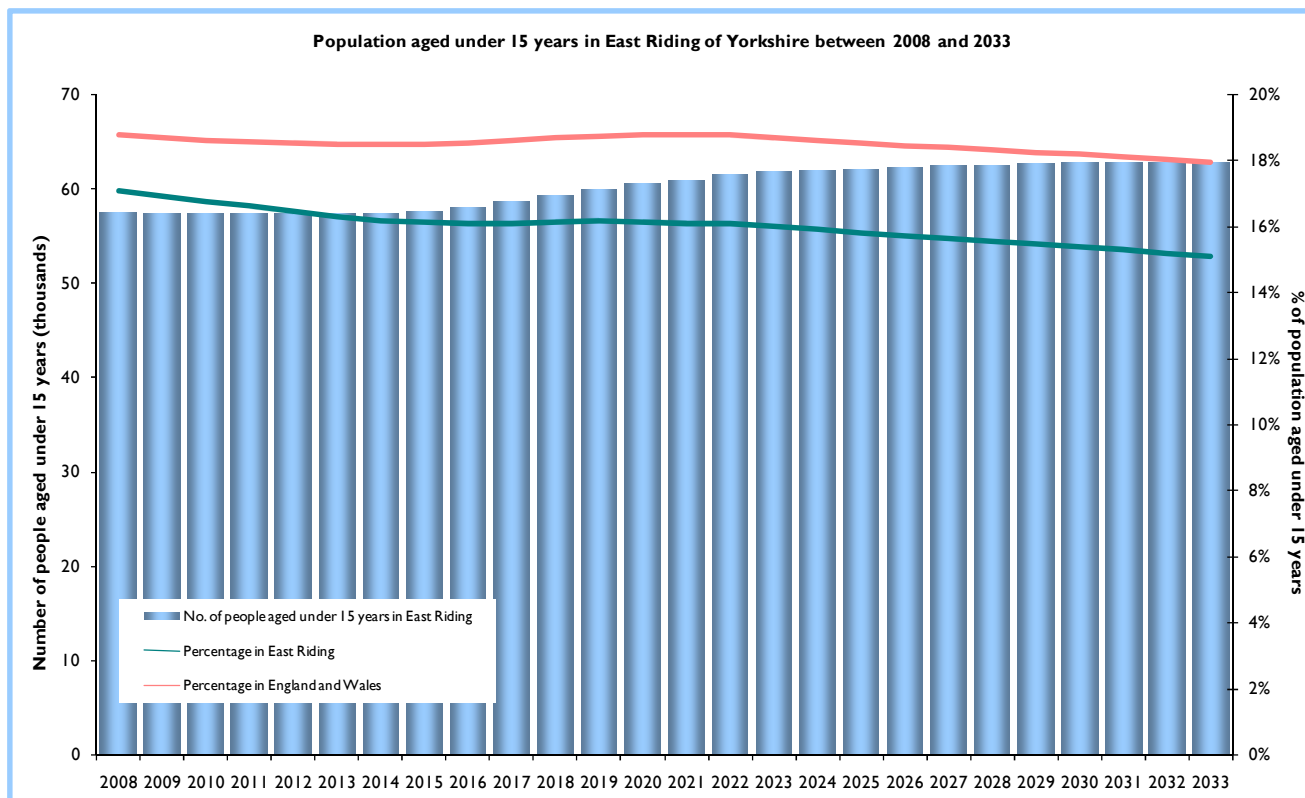
Percentage of the East Riding population by age for 2008, 2020, 2033



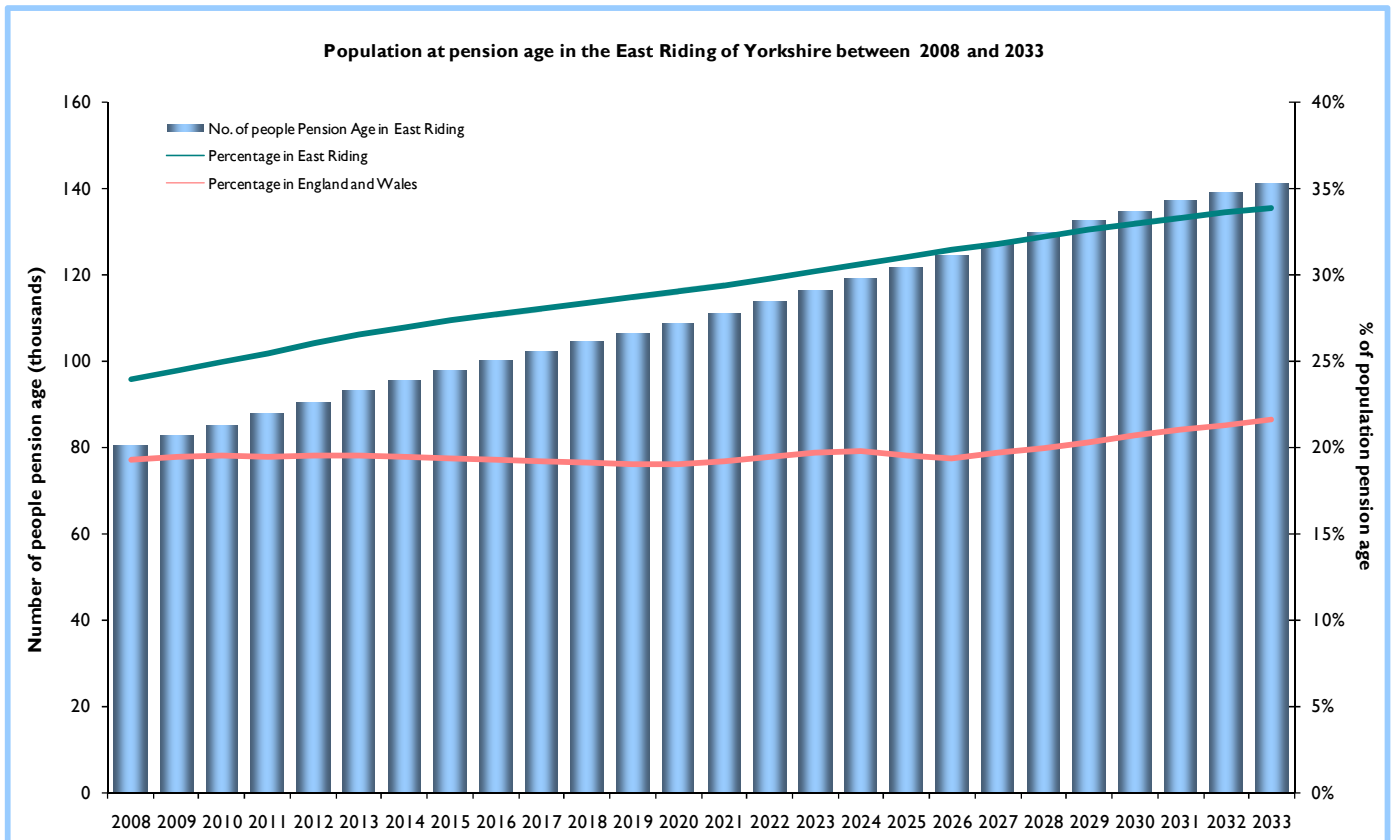
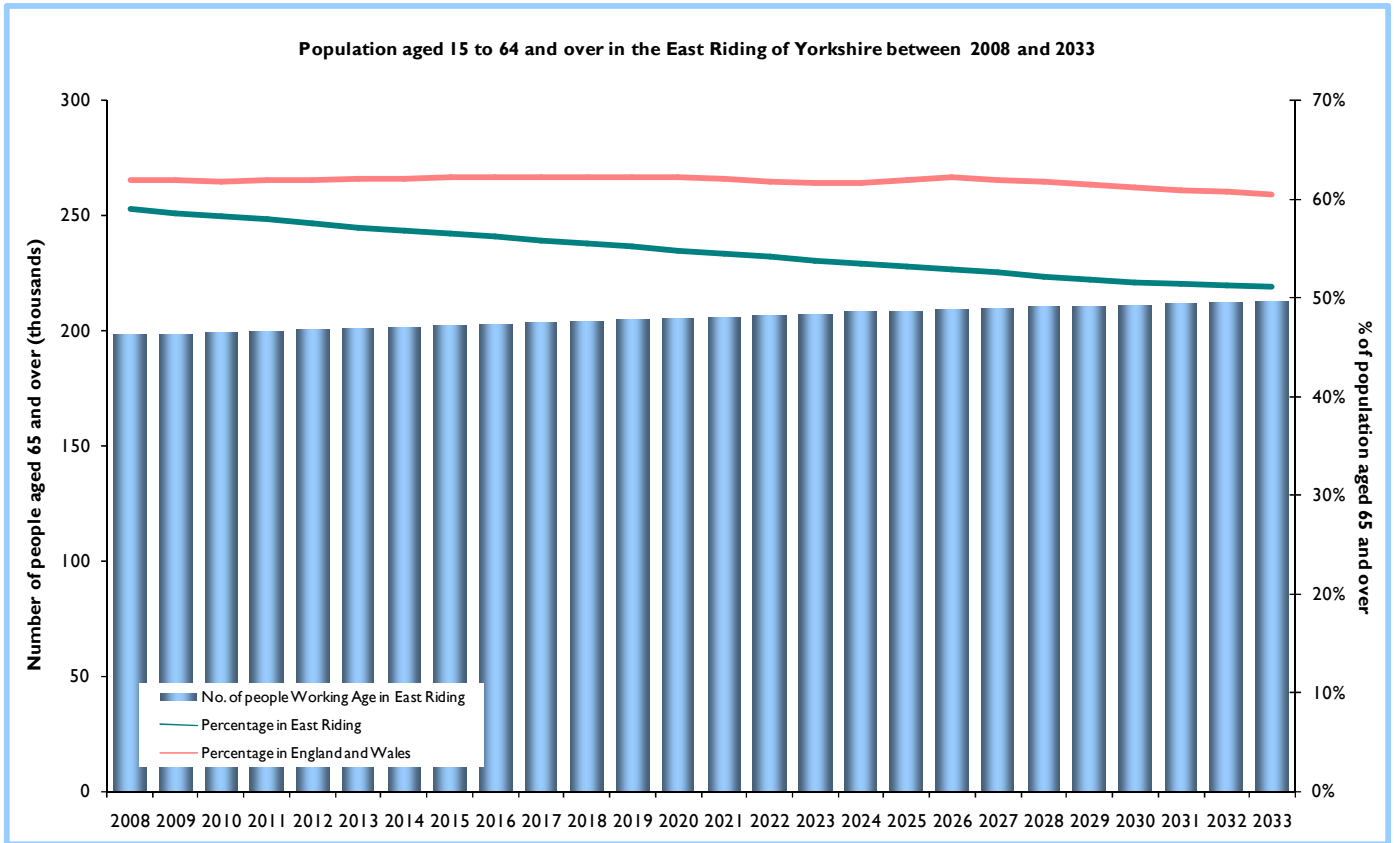
© Crown Copyright 2010, Source: ONS Population Estimates Unit, 2010

Mid-year estimates for the East Riding of Yorkshire, as at 30 June 2008

Year	Total (in thousands)	Male	Female
2008	336.1	165.3	170.8
2009	338.9	166.9	172.0
2010	341.9	168.7	173.2
2011	344.9	170.5	174.4
2012	348.0	172.3	175.7
2013	351.1	174.1	177.0
2014	354.3	175.9	178.4
2015	357.6	177.8	179.8
2016	360.9	179.6	181.3
2017	364.3	181.6	182.7
2018	367.7	183.5	184.2
2019	371.3	185.5	185.8
2020	374.8	187.4	187.4
2021	378.5	189.4	189.1
2022	382.1	191.4	190.7
2023	385.7	193.4	192.3
2024	389.2	195.3	193.9
2025	392.6	197.2	195.4
2026	396.0	199.1	196.9
2027	399.3	200.9	198.4
2028	402.5	202.7	199.8
2029	405.6	204.4	201.2
2030	408.6	206.1	202.5
2031	411.5	207.7	203.8
2032	414.3	209.3	205.0
2033	417.0	210.8	206.2

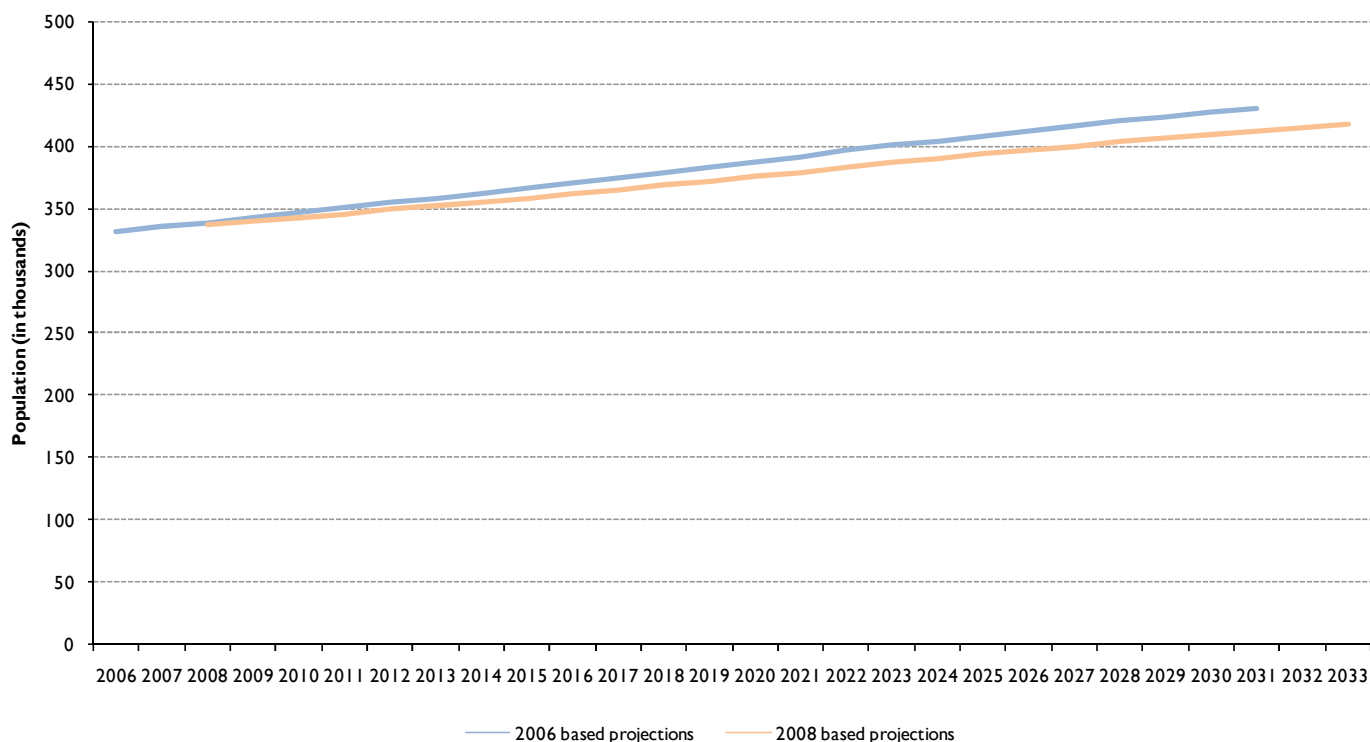


© Crown Copyright 2010, Source: ONS Population Estimates Unit, 2010



Methodology used for population projections: Long-term subnational population projections are an indication of the future trends in population by age and sex over the next 25 years. They are trend-based projections, which means that assumptions for future levels of births, deaths and migration are based on observed levels over the previous five years. They show what the population will be if recent trends in these factors continue. The projections do not take into account any future policy changes that have not yet occurred. They are constrained at a national level by the national projections produced by Government Actuaries' Department.

2006 and 2008 based projections



The above graph compares the 2008-based projection with previous projections and shows that the latest projected population is lower than the previous 2006-based projections. For example for the year 2031 the most recent projections are 4.3% lower than the 2006-based projections.

Data Source: Office for National Statistics mid-2008 estimates and population projections