

EAST RIDING OF YORKSHIRE

Economic Profile



MAIN TOWNS AND VILLAGES IN THE EAST RIDING

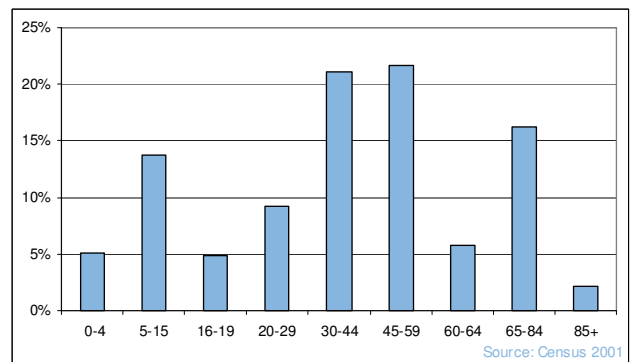
Anlaby, Bridlington, Beverley, Cottingham, Driffield, Goole, Hedon, Hessle, Hornsea, Howden, Market Weighton, Pocklington, Willerby and Withernsea

POPULATION

On Census Day, 29 April 2001, there were 314,113 people who usually lived in the East Riding. 153,049 of them were male, and 161,064 were female.

18.8% of the population is under 16; 62.8% is aged between 16 and 64, and 18.4% is aged 65 and over. 66.7% of people aged 16-74 are Economically Active.

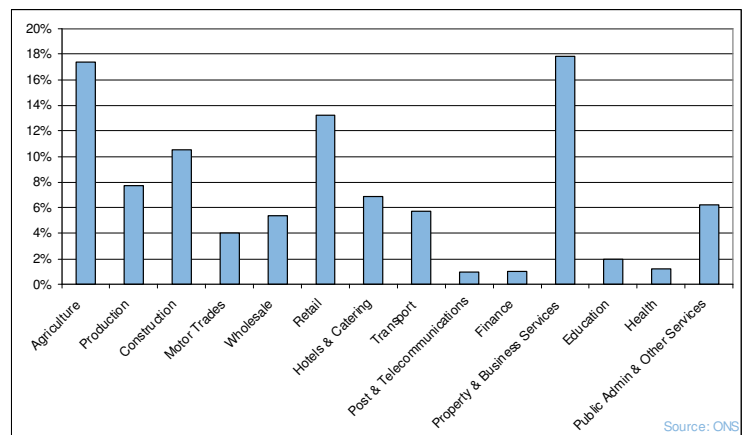
The estimated population in 2004 was 324,800 (Source: ONS, Mid-Year Estimates)



BUSINESS TYPE (LOCAL UNITS)

The majority of businesses, in 2004, are in the 'Property & Business Services' industry (17.9% or 1,910 Local units), while the 'Agriculture' and 'Retail' sectors account for a further 17.3% and 13.2% respectively.

'Post & Telecommunications', 'Finance' and 'Health' represent the three smallest sectors, accounting for just 3.2% collectively.



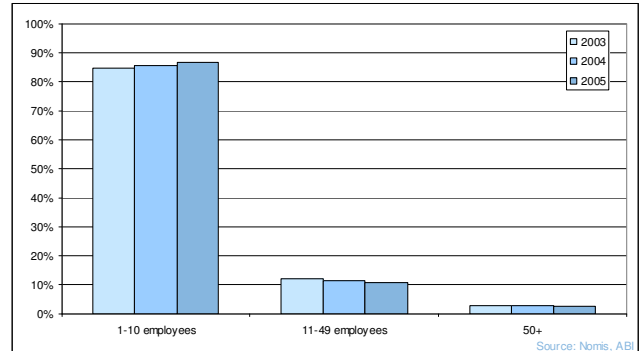
The 2004 figures are:

Agriculture	1855	Transport	610
Production	820	Post & Telecommunications	105
Construction	1125	Finance	110
Motor Trades	435	Property & Business Services	1910
Wholesale	575	Education	215
Retail	1415	Health	130
Hotels & Catering	730	Public Admin & Other Services	665

BUSINESS SIZE

86.8% of businesses in the East Riding in 2005 employed fewer than 10 employees. This figure has increased from 84.8% in 2003, a difference of 1,294 business units.

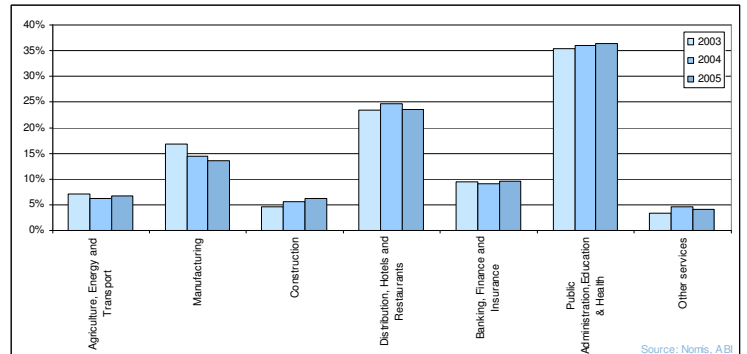
Alternatively, 296 businesses (2.4%) in the East Riding employed more than 50 people.



EMPLOYMENT

ABI 2005 data shows that there were 107,932 jobs in the East Riding. 36.4% of these people worked in the 'Public Administration and Health' sector while only 9.6% of employment involved the 'Banking, Finance and Insurance' sector.

The total number of people employed in the East Riding has decreased from 111,710 jobs in 2003 to 107,932 in 2005, a decrease of 3.4%.



The Census 2001 shows that there are:

Employed Part-time	13.4%	Self - employed	11.2%
Employed Full-time	41.6%	Retired	14.4%

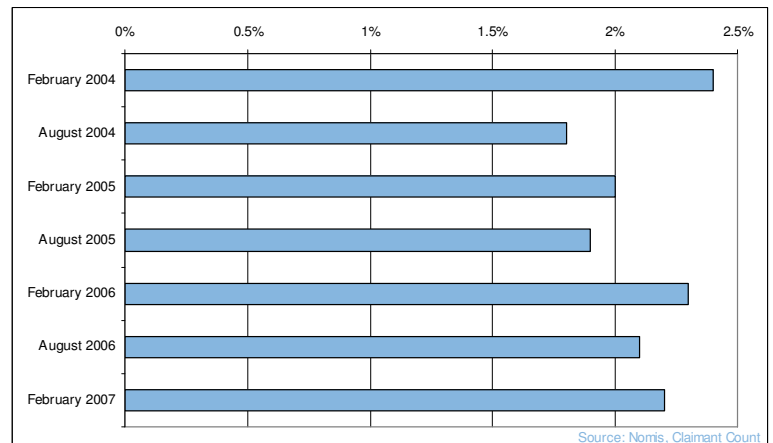
The 2005 ABI employment by sector figures are:

Agriculture, Energy and Transport	7,143	Banking, Finance and Insurance	10,346
Manufacturing	14,653	Public Administration, Education & Health	39,313
Construction	6,689	Other Services	4,461
Distribution, Hotels and Restaurants	25,327	Total	107,932

UNEMPLOYMENT

The average unemployment rate based on 2004/06 biannual figures is 2.1%. Average unemployment in the winter months of February (2.2%) is slightly higher than the August rate (1.9%).

The lowest unemployment rate occurred during August 2004 (3,454 people), while the highest rate occurred in February 2004 (4,612 people).

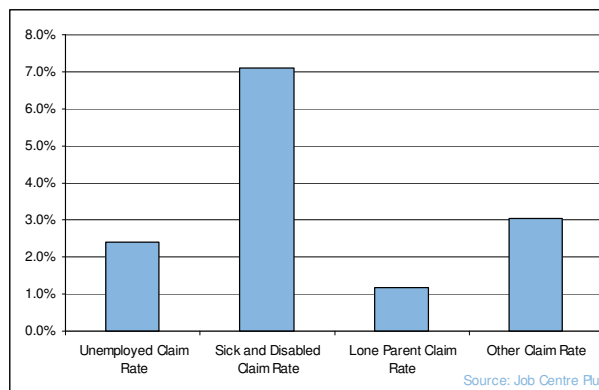


WORKING BENEFIT CLAIMANTS

The total claim rate for the East Riding, in December 2006, was 13.7% or 24,540 people

The majority of these people (12,715) fall into the sick/disabled category while only 4,300 people claimed actual unemployment benefits.

Only 1.2% or 2,070 people received 'lone parent' benefits.

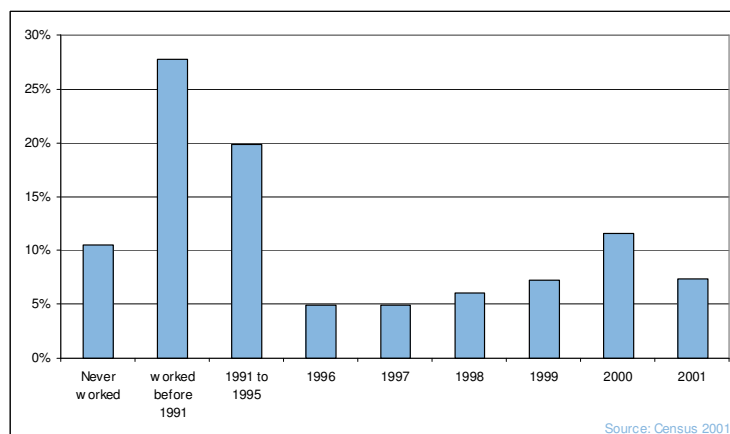


TIME SINCE LAST WORKED

Census data shows there are 83,666 people, aged between 16 and 74, in the East Riding that are not in employment.

27.7% of these have not worked since 1991, while a further 10.5% or 8,795 people have never worked.

37.0% of people currently not in employment did work in the five years prior to the census.



AVERAGE HOUSEHOLD INCOME

The average household income, provided by CACI, demonstrates a gradual increase during the three-year period. The increase between 2005/06 was more significant, 4.5% compared with 1.2% between 2004/05.

Year	Average Household Income (£)
2004	£29,919
2005	£30,273
2006	£31,644

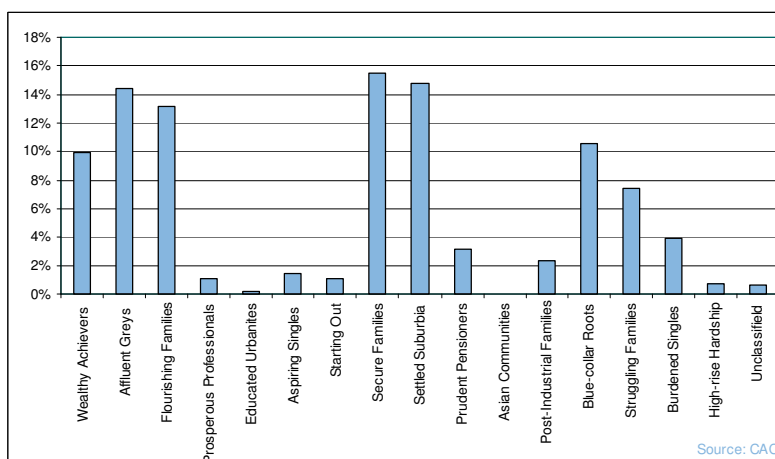
Source: CACI Ltd, Paycheck

ACORN GROUPS

The East Riding has large proportion of 'Wealthy Achievers' and 'Affluent Grey', 9.9% and 14.4% respectively.

There are also significant amounts of 'Secure Families' (15.5%) and 'Settled Suburbia' (14.8%).

Alternatively, the East Riding has small proportions of 'Educated Urbanites' and 'High-rise Hardship'.

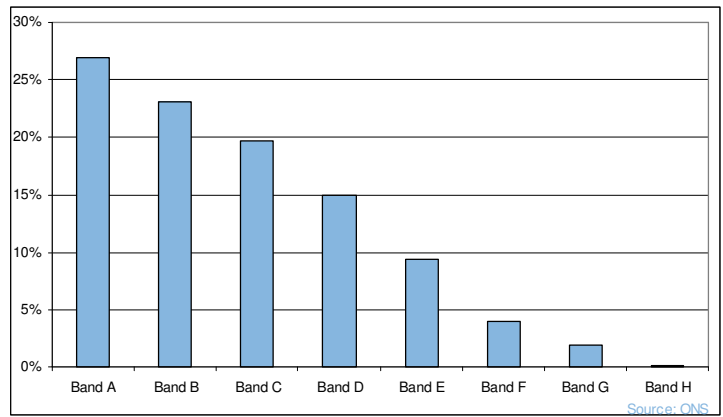


COUNCIL TAX

There are 38,303 dwellings in the East Riding that occupy the lowest council tax band (A). This accounts for 26.9% of all dwellings.

Band D properties make up a further 14.9% of all dwellings or 21,200.

Only 215 Dwellings or 0.15% occupy the highest council tax band (Band H).

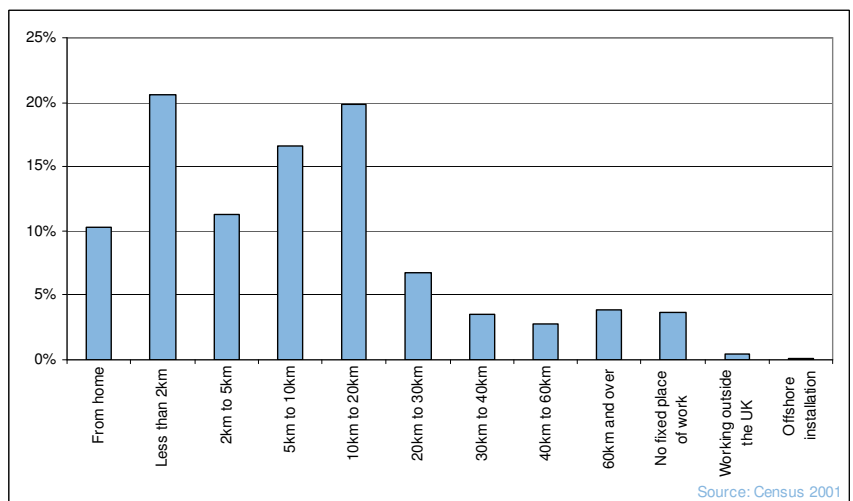


DISTANCE TRAVELLED TO WORK

The Census asked people about the distance they travelled to work.

20.6% or 29,897 people reported that they travel less than 2km to work, while 10.3% worked from home.

26.6% of respondents or 38,564 people reported that they travel between 10 and 30 km.



TRAVEL TO WORK PATTERNS

Census information shows that, 24% (34,692) of the people living in the East Riding are employed in Hull. A further 4% or 5,063 people are employed in York.

1% of the East Riding commutes to Leeds. This accounts for 1,730 people.

