

Events Listing 2011

Date	Event Title
03/10/14/21/28 Apr	Piano Recital / Concert
05/19 Apr	Walking to Health - 1 hour walk 10.30am
10 Apr	Friends of Sewerby Outreach -Treasure Hunt
12 Apr	Walking to Health - 2 hour walk 10am
16 Apr	Hall Opens
16 Apr	NEW 2011 - Sewerby Scarecrows
17 Apr	Band Concert
23 Apr	NEW 2011 - Easter Egg Hunt
24 Apr	Jousting Re-enactment / Have a go Archery
24-25 Apr	Craft Fair
26 Apr	NEW 2011 - Bug Walks / Adventure Challenges
29-30 Apr	Friends of Old Time American Music and Dance
May	
01-02 May	Friends of Old Time American Music and Dance
01 May	NEW 2011 - Team M.A.D (BMX display team)
03/17 May	Walking to Health - 1 hour walk 10.30am
03 May	Garden Tours
05/12/14/19/22/26 May	Piano Recital / Concert
08 May	Band Concert
10 May	Walking to Health - 2 hour walk 10am
15 May	Band Concert
21 May	Sue Ryder Midnight Walk
22 May	East Yorkshire Thoroughbred Car Rally
29 May	NEW 2011 - Mighty Smith Show
29 May	NEW 2011 - Chainsaw Carver
29 May	Craft Fair
June	
05 Jun	Band Concert
05 Jun	NEW 2011 - The Wacky Tumblairs
07/21 Jun	Walking to Health - 1 hour walk 10.30am

09/23/30 Jun	Piano Recital / Concert
10-12 Jun	Poetry Festival
12 Jun	East Coast Run - Sewerby Fields
14 Jun	Walking to Health - 2 hour walk 10am
18 Jun	Artist in the Park - Sue Spivey
18/19 Jun	Band Concert
25 Jun	Artist in the Park Acrylic Workshop - Sue Spivey
26 Jun	Race for Life
26 Jun	Craft Fair
July	
02 Jul	NEW 2011 - Jazz Workshop
03 Jul	Cactus Society Show
05/19 Jul	Walking to Health - 1 hour walk 10.30am
09 Jul	Artist in the Park Acrylic Workshop - Sue Spivey
10 Jul	Band Concert
12 Jul	Walking to Health - 2 hour walk 10am
12 Jul	Garden Tours
14/17/21/28 Jul	Piano Recital / Concert
16 Jul	Artist in the Park -Sue Spivey
19/31 Jul	Craft Fair
23 Jul	NEW 2011 - Wingbeats Flying Day
24 Jul	Band Concert
24 Jul	Outdoor Theatre Production - Snow White
25 Jul	NEW 2011 - Bushcraft
27 Jul	Wildlife Art Safari with Michele Davy
29 Jul	Magic Show, Face Painting and Donkey Rides
August	
01 Aug	NEW 2011 - Have a go Archery
02/16 Aug	Walking to Health - 1 hour walk 10.30am
02 Aug	Garden Tours
03 Aug	Wildlife Art Safari with Michele Davy
04 Aug	NEW 2011 - Mini Mammal Safari
05 Aug	Magic Show, Face Painting and Donkey Rides
09 Aug	Walking to Health - 2 hour walk 10am

10 Aug	NEW 2011 - Shelter Building
12 Aug	Donkey Rides
14 Aug	The Big Picnic / Have a go Archery
14/18/21/25 Aug	Piano Recital / Concert
16/23/28 Aug	Craft Fair
19 Aug	Magic Show, Face Painting and Donkey Rides
21 Aug	Morris Minors Owner's Club
24 Aug	Wildlife Art Safari with Michele Davy
25 Aug	NEW 2011 - Orienteering and Adventure Challenges
26 Aug	Magic Show, Face Painting and Donkey Rides
28 Aug	East Yorkshire Thoroughbred Car Rally
28- 29 Aug	NEW 2011 - Medieval Living History
31 Aug	Wildlife Art Safari with Michele Davy

November	
01/15/29 Nov	Walking to Health - 1 hour walk 10.30am
08 Nov	Walking to Health - 2 hour walk 10am
19-20 Nov	Craft Fair
December	
06 Dec	Walking to Health - 2 hour walk 10am
11/15 Dec	Music of Christmas
13 Dec	Walking to Health - 1 hour walk 10.30am
17-18 Dec	Friends of Sewerby Outreach Santa's Grotto

September	
01/08/15/22/24/25/29 Sep	Piano Recital / Concert
02-05 Sep	Friends of Old Time American Music and Dance
06/20 Sep	Walking to Health - 1 hour walk 10.30am
10 Sep	NEW 2011 - Wingbeats 'Flying Words, Flying Music' Concert
11 Sep	Rolls Royce Car Club
11/18 Sep	Craft Fair
13 Sep	Walking to Health - 2 hour walk 10am
17 Sep	NEW 2011 - Wingbeats 'Voxare' Concert
25 Sep	Hall Closes
October	
04/18 Oct	Walking to Health - 1 hour walk 10.30am
11 Oct	Walking to Health - 2 hour walk 10am
16 Oct	Wedding Fayre
23 Oct	Piano Recital / Concert
28 Oct	Halloween Workshop - Scary Masks with Michele Davy
29 Oct	Halloween Workshop - Lantern Workshops with Michele Davy
29 Oct	Halloween Story Walks
30 Oct	Craft Fair

Courtyard Craft Outlets Seasonal Variations

- Events subject to weather conditions
- Everything in this brochure was correct at the time of print

Opening times and admission prices 2011

Our 2011 season starts on 16 April and ends on 25 September.

Estate office
Open daily throughout the year, 9.30am-4.30pm

Estate and gardens
Open all year round from dawn to dusk, according to the season.

Hall and Zoo
Open daily during the season, 10am-4.30pm

Clock Tower Tea Rooms
Open daily (seasonal variations)

Golf and putting
Open daily during the season, 10am-6pm

(Last clubs issued approximately two hours before closing. The management reserve the right to extend the closing times of golf and putting at their discretion).

Car park
Free car parking is open daily throughout the year except 25-26 Dec / 01 Jan

Admissions
Estate admission prices (includes Hall, Zoo and Gardens)

There will be an increase of 50p on all admission charges during peak season from 25 July until 5 September.

	Off Peak	Peak
Adult	£4.50	£5
Over 60	£3.70	£4.20
Child (3-15 years)	£2.50	£3
Family (2 adults +3 children)	£14	£16.50
Group (20+)	25 per cent off	(must be pre-booked)

Season passes
(allows unlimited admission to the Hall, Zoo and Gardens)

Adults and over 60	£14.50
Child (3-15 years)	£7.50
Family (2 adults +3 children)	£42



Zoo admission prices
(October - March)

Adult and over 60	£2.25
Child (3-15)	£1.10

Golf
(not included in admission charge)

9 hole golf (Pay boxes open)

Adult	£3
Over 60	£2.40
Child (3-15 years)	£1.80

9 hole golf (Pay boxes closed)

Adult	£4
Over 60	£3.50
Child (3-15 years)	£3
Ball deposit (refundable)	£1

Putting green (estate office)

Adult and over 60	£2
Child (3-15 years)	£1

Golf season passes

Adult	£90
Over 60	£60
Child (3-15 years)	£45

Landtrain
Sewerby Hall to Limekiln Lane (and vice versa)

Adult single	£1.70
Child (3-15 years) single	£1
Adult return	£2.60
Child (3-15 years) return	£1.50

Sewerby Hall to Leisure World

Adult single	£2.60
Child (3-15 years) single	£1.50
Adult return	£4.20
Child (3-15 years) return	£2.50

NEW
Sewerby Hall and Gardens and Land Train Pass (and vice versa)

Adult	£65
Child	£50
Family	£125

(Land Train March-September)

NEW
Sewerby Hall and Garden Business Pass
(Hotel / Guesthouse / Residential Homes)

Adult	£50
Child	£35
Family	£150

Contact information
Postal address:
Sewerby Hall and Gardens
Church Lane
Sewerby
Bridlington
East Riding of Yorkshire
YO15 1EA
Tel: (01262) 673769
Fax: (01262) 673090

Email:
sewerbyhall@eastriding.gov.uk
www.sewerby-hall.co.uk
GPS:YO15 1EA



Visitor Information

TOILETS
Toilet facilities are available in the hall, the courtyard and the Clock Tower Tea Rooms. Disabled toilets are available in the courtyard toilets and hall toilets.

BABIES AND TODDLERS
In order to preserve the historical items in the hall pushchairs and prams are not permitted. There are baby-changing facilities located in the courtyard and hall toilets.

DOGS
Dogs must be on a lead at all times and are not allowed in the hall, zoo or Clock Tower Tea Rooms. Assistance dogs are welcome.

ACCESS FOR ALL
The Hall and estate are disability-friendly and we have a limited amount of parking bays for wheelchair users. There are steps around the Estate especially on the Woodland Walk area where the path is surfaced with bark chippings. Alternative access and routes are clearly signed.

Disabled access to the hall is available near the estate office entrance and there is a lift to all floors. Please note that due to conservation issues, motorised buggies are not allowed in the hall. We have a limited number of wheelchairs for use inside the hall only but these are available on a first come, first served basis.



Sewerby Hall and Gardens is the perfect family day out for everyone.

PHOTOGRAPHY
No photography in the hall is allowed. No commercial photography anywhere on site is allowed without prior permission.

MONTHLY E-NEWSLETTER
Sewerby Hall and Gardens send out regular e-newsletters about the activities at Sewerby Hall. If you would like to be added to this list please email: sewerby.hall@eastriding.gov.uk



The information in this document is available on request in Braille, large print and other languages please call 0800 849 5060.



SEWERBY HALL AND GARDENS

2011





Jousting
Re-enactment

Sewerby Hall and Gardens

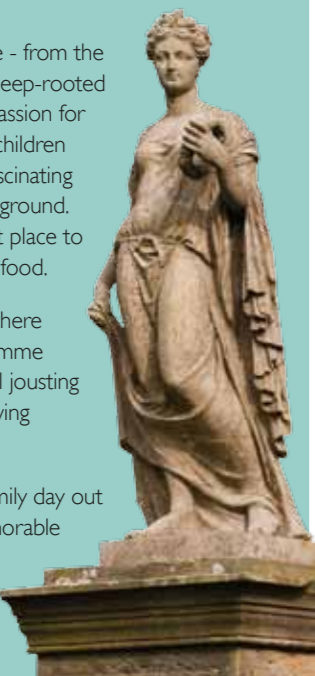
Introduction

Uniquely situated on a dramatic cliff-top position, forming the gateway to the Flamborough Heritage Coast, Sewerby Hall enjoys spectacular views over the picturesque expanse of Bridlington Bay.

Sewerby Hall offers something for everyone - from the magnificent award-winning gardens to the deep-rooted heritage of the grand hall for those with a passion for history. There is no better way to keep the children amused than at our very own zoo with a fascinating collection of animals and the adventure playground. The Clock Tower Tea Rooms are the perfect place to sit and unwind whilst enjoying our delicious food.

As well as the exciting activities for all ages there is an amazing events and exhibitions programme throughout the year. This includes the annual jousting event, magic days, wood carving, medieval living history days and band concerts.

Sewerby Hall and Gardens is the perfect family day out for everyone. A wonderful experience memorable for all ages!



Sewerby Hall is a grade one listed building constructed between 1714-1720 by the Greame family.



History of Sewerby Hall

Sewerby Hall is a grade one listed building constructed between 1714-1720 by the Greame family. Between 1808 and 1856 numerous additions were made to the hall including the portico, stable block, gatehouse, balustrade and conservatory (The Orangery). It is a very fine example of an early Georgian house with 19th century additions.

In 1934 the hall was purchased by the Borough of Bridlington Council and was first opened to the public on 1 June 1936 by the famous local aviator, Amy Johnson. An impressive collection of memorabilia in tribute of Amy was donated in 1958 by her father and put on display in 1959 for the public.

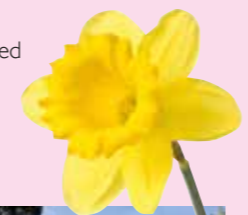
Considered by many as the 'Jewel in the Crown' of East Riding of Yorkshire Council, the hall is an architectural tour of the Georgian, Regency, Victorian Greek Revival and High Victorian taste and is a rewarding experience.

The Gardens and Woodland Walk

Sewerby Hall has over 50 acres of multi-award winning landscaped gardens (Yorkshire in Bloom Gold Award 2008, 2009 and 2010) and contains numerous woodland walks, including the Marie Curie Daffodil Trail (during spring).

The elegant symmetry of the formal gardens and the magnificent Monkey-Puzzle trees (reputed to be among the oldest in England) are a must see. The old English rose gardens and the walled gardens are perfect locations to relax on one of the many benches or to stroll through the colourful floral displays.

Sewerby estate green houses serve as a great environment for the very successful Bridlington Outreach Horticultural project. Using horticulture and related tasks, it provides both training and therapeutic opportunities for adults with learning difficulties. Project users gain experience in all aspects of community living: this includes employment training, communication and academic skills, horticultural tasks, therapeutic occupation and many more depending on the aspirations of the individual. Plants from the project are on sale to visitors at various times throughout the year.



Clock Tower Tea Rooms

Open all year round, the award-winning tea rooms offer the best in locally sourced and freshly prepared snacks and light meals. Among the delights on offer are our fabulously mouth-watering paninis, delicious cakes and sensuously rich ground coffee.



Golf and Putting

For those golf lovers and younger enthusiasts, Sewerby has its very own challenging 9-hole pitch and putt golf course. Soft undulating fairways protected by clusters of mature trees, are just waiting to catch the erring tee shot. Alternatively the whole family can enjoy the 18-hole putting pitch.

Children's Activities

The children's play area has challenging and traditional play equipment with protective surface set within a dog-proof perimeter fence.



Exhibitions

Our 2011 art and exhibitions programme runs during the entire season. On show there will be the customary high standard of work from local artists new to Sewerby Hall and Gardens. Exhibitions include the Wagoners Special Reserve and In Brave Company, the story of building the monument to 158 Squadron at Lissett.



The walled gardens

Sewerby Zoo

Sewerby is delighted to have its very own zoo, with an exciting collection of domestic and wild animals, birds and reptiles; enjoyment for all ages.

The Sewerby Humboldt penguins are a fabulous attraction. Visitors can watch them swimming, sunbathing and being fed every day at 3pm.

Sewerby Hall is very grateful for support from all our visitors through the very successful animal adoption programme. Adoption applications are available from the estate office.



**pinguins
fed every
day at 3pm**



Special Occasion and Room Hire

Sewerby Hall and Gardens is the perfect venue for civil wedding ceremonies and special occasions. The Orangery is a magnificent glass conservatory and looks south over Bridlington Bay with seating for up to 120 guests. The Swinton Room is a smaller Victorian reception room and can seat up to 70 guests with views of the north gardens.

The Orangery, Swinton Room and Board Room are also ideal for corporate hire; from training days to meetings and workshops, Sewerby is able to cater for your needs. We have ample parking and onsite catering facilities to help ensure your event is a success.

Flamborough Lighthouse

In conjunction with Trinity House, Sewerby Hall and Gardens and Yorkshire Wildlife Trust offers guided tours of Flamborough Lighthouse.

The lighthouse is open to the public between April and October. For further details and group bookings contact Sewerby Hall and Gardens estate office on (01262) 673769 or visit www.trinity-house.co.uk

