

## Visitor Information

**Opening Times:** Open every day of the year.

**Free Car Park:** Space for 20 cars, please park considerately.

**Public Toilets:** Public toilets at Bridgegate, near St Helen's Square, Howden (2½ miles). A temporary toilet is open on the reserve for special events.

**Accessibility:** There is a surfaced level path around the main pond. The rail trail is firm but un-surfaced, there are steps to the borrow pits (max 27 steps).

**Refreshments:** Black Swan, High Street, Eastrington. Tearooms and pubs in Howden.

**Dogs:** Keep your dog under close control, out of the ponds, and do not disturb wildlife or other visitors. Please clean up after your dog.

**Enjoy a Safe Visit**  
Camping and fire lighting are not permitted.  
Keep out of the ponds and wetland areas.

## What to Do

- Nature Trails
- Animal Sculptures
- Bird Feeding Station
- Wildlife Watching
- Fishing



## Useful Contacts

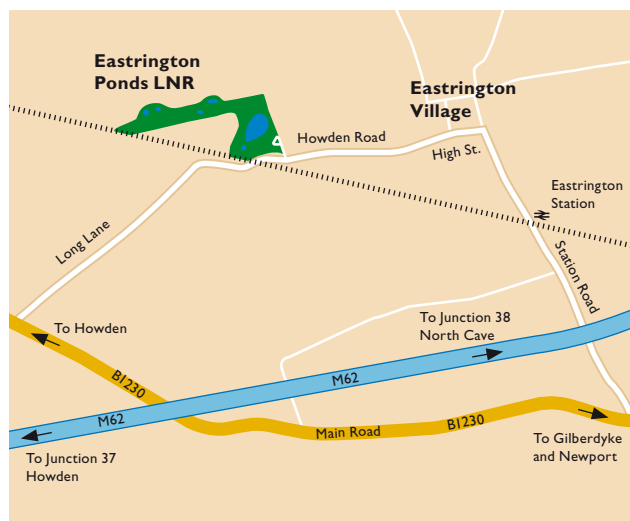
**Countryside Access Team**  
East Riding of Yorkshire Council  
Tel: (01482) 395210

**Countryside Warden**  
Information about fishing at the Ponds.  
Tel: (01482) 395680 or 07867 905185  
[www.eastriding.gov.uk/countrysideaccess](http://www.eastriding.gov.uk/countrysideaccess)  
[countryside.access@eastriding.gov.uk](mailto:countryside.access@eastriding.gov.uk)

## How to Find the Reserve

Eastrington Ponds is situated on the western side of Eastrington village, 3 miles from Howden. By road, approach on the B1230 Howden to Newport road, turning off towards Eastrington and following the brown road signs featuring a fish symbol.

**Reserve car park:**  
OS Explorer Map 291: Grid ref: SE 787 298.  
Postcode: DN14 7PL



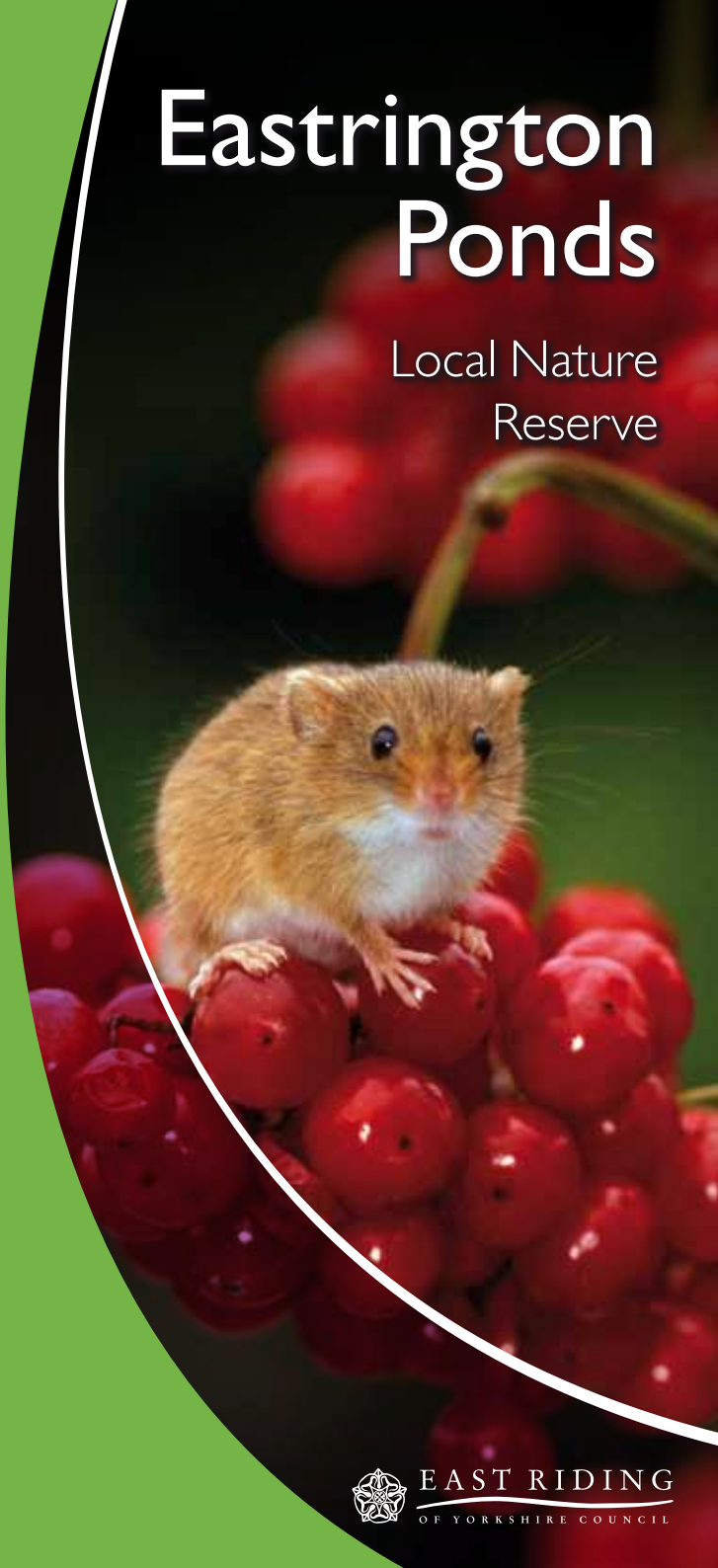
-  The nearest railway station is Eastrington (1 mile).  
Enquiries: 08457 48 49 50. [www.nationalrail.co.uk](http://www.nationalrail.co.uk)
-  There are bus stops Howden Road, 200 metres from the car park entrance. EYMS bus routes 153/155/156 Hull to Goole.  
BUSCALL enquiries: (01482) 222222.  
[www.eyms.co.uk](http://www.eyms.co.uk)

East Riding of Yorkshire Council will, on request, provide this document in Braille, audio or **large print** format. Please telephone (01482) 393939.



# Eastrington Ponds

## Local Nature Reserve



## A Unique and Special Place

Eastrington Ponds is a 23 acre nature reserve with a large fishing pond, several wildlife ponds, a tree-lined disused railway line and a small meadow. The series of borrow pits provide valuable wetland areas, where wildlife is not disturbed. It is a special place where you can simply soak in its tranquillity and relax!

## History

What is now a peaceful nature reserve was once the most industrial area of Eastington. The large pond sits on the site of the former Eastington Brick Works and the tranquil rail trail was once the busy Hull to Barnsley line. For 100 years coal was transported by train from the West Riding coalfields to Hull Docks. The line closed in 1959 and has now returned to nature. The borrow pits were dug to provide material to build the railway embankment.

Eastrington Ponds was designated a Local Nature Reserve in 2002 in recognition of its wildlife value and importance to the local community.

## Reserve Management

Eastrington Ponds is managed by the Countryside Access Team. Our goal is to balance recreational activities with conserving wildlife. The large pond is a safe home for water voles, while at the same time it is popular for fishing. Willow hurdles are placed in the water near pond edges to protect the banks from wave action, and to encourage young plants to grow.

Wetland areas are treasured where reeds and sphagnum moss grow. Sometimes invading willow tree saplings are removed to make sure wet areas stay soggy. Big old willow trees along the old railway line are brilliant for birds, such as willow tits that excavate nests, and for bats such as Daubenton's bats, which roost in tree holes.

Britain's smallest mammal, the harvest mouse, lives in the small meadow, building their unique tennis ball shaped nests amongst the long grass.

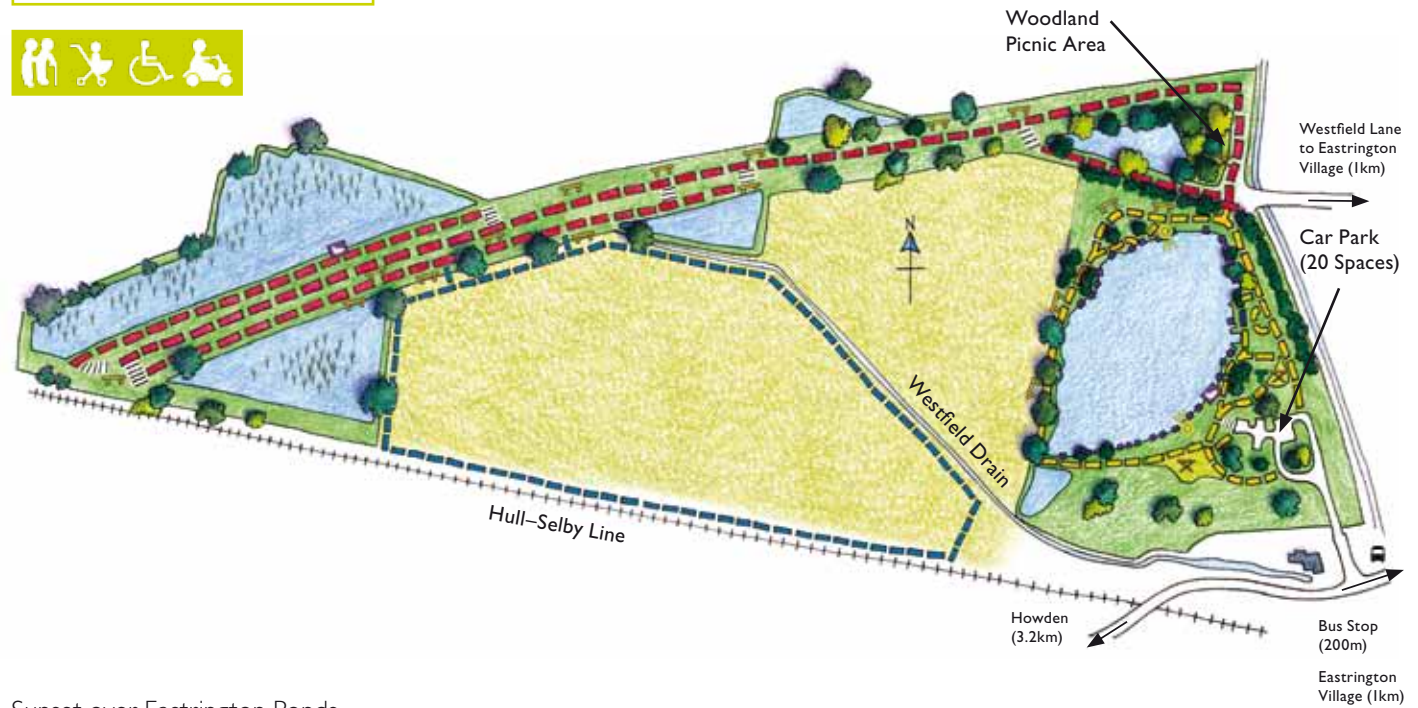
### Useful telephone numbers

Countryside Officer (01482) 395210  
 Police 0845 6060 222  
 Tourist Information (01482) 640852  
 East Riding of Yorkshire Council  
 24 Hour Call Centre (01482) 393939  
[www.eastriding.gov.uk/countrysideaccess](http://www.eastriding.gov.uk/countrysideaccess)

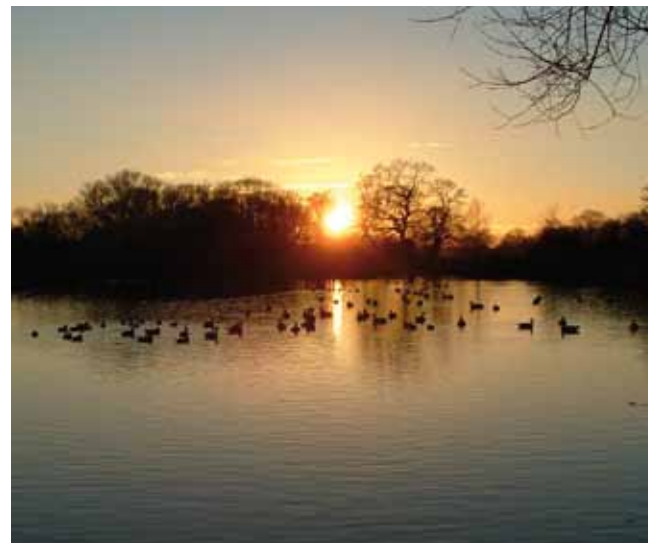


# Eastrington Ponds

Local Nature Reserve



Sunset over Eastington Ponds



Railway Trail (2km)	Bird Hide	
Reed Bed	Permissive Path	Pond Trail (0.5km)
Viewing Point	Picnic Area	Bench
Steps	Bird Feeding Station	Fishing Pegs