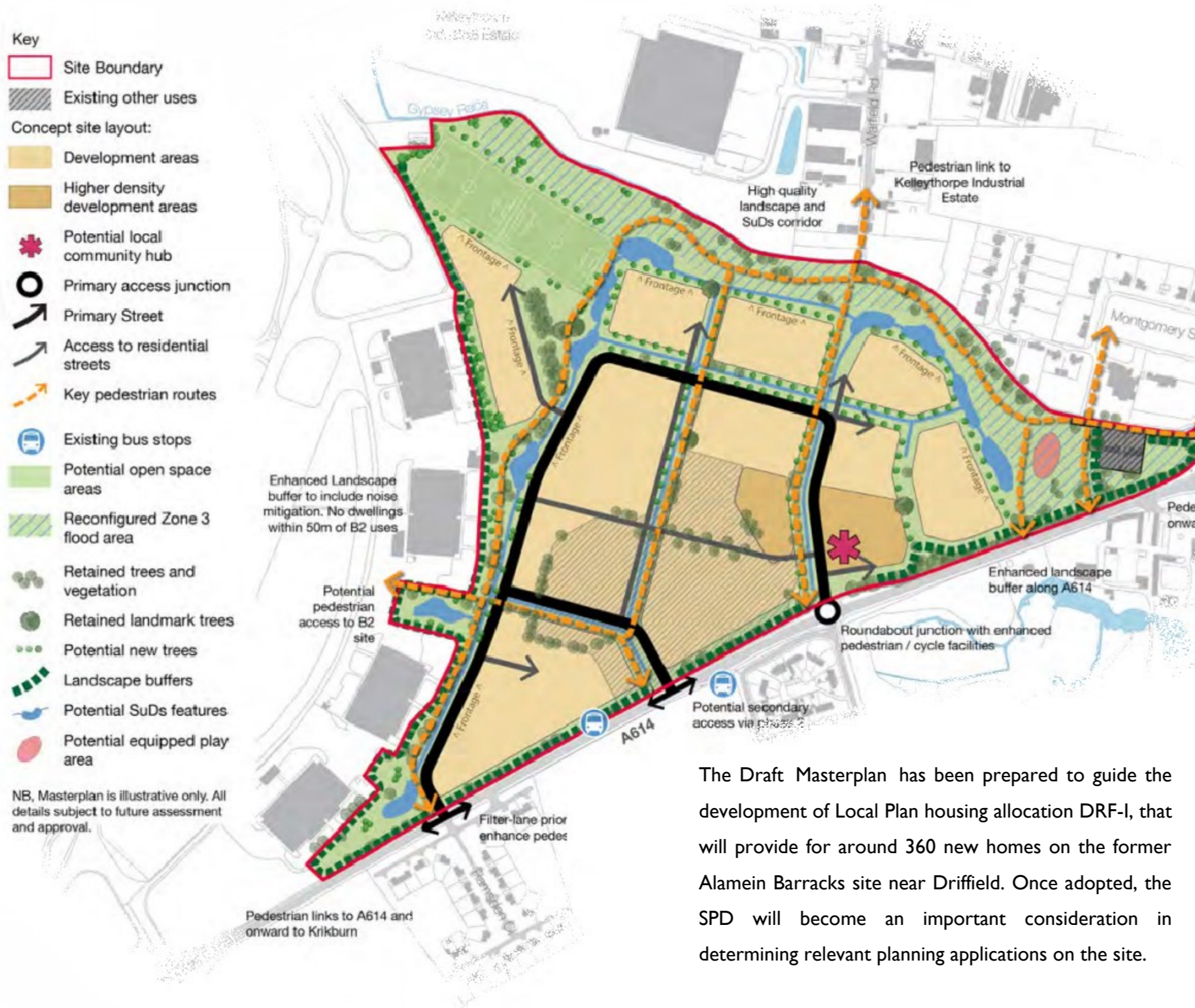


Public Consultation Friday 6 March - Friday 24 April 2020

Alamein Barracks Draft Masterplan Supplementary Planning Document (SPD)



Drop-in & Talk To Us:

Two Public drop-in sessions will be held on:

- Wednesday, 18 March, from 4.30-7pm at Driffield Community Centre (Mill Street, Driffield, YO25 6TR). Free parking is provided on site.
- Wednesday, 25 March, from 4-7pm at Kirkburn Village Hall (Main Street, Kirkburn, YO25 9DL). Free parking is provided on site.

How can I comment on the consultation?

Email: forward.planning@eastriding.gov.uk

Write to: Forward Planning (AS67), County Hall, Cross Street, Beverley, HU17 9BA

How can I view the consultation?

View online at: www.eastriding.gov.uk/spd

View hard copies at: The Driffield Centre, Beverley Customer Service Centre and on request at Kirkburn Parish Council.

The Draft Masterplan has been prepared to guide the development of Local Plan housing allocation DRF-I, that will provide for around 360 new homes on the former Alamein Barracks site near Driffield. Once adopted, the SPD will become an important consideration in determining relevant planning applications on the site.